



# Vineland Athletic Complex

# Project Overview

Sports complex in Vineland with a focus on multipurpose sports fields for leagues and tournaments in the Mid-Atlantic region.

Project will include significant site improvements, high-quality amenities for families.

The project is currently in feasibility study phase. RFP prepared by the City in October. The Sports Facilities Companies of Clearwater, FL was awarded.



# Additional Benefits

- Diversifies the regional economy
- Indirect jobs created by the facility across industries
- Opportunities for health care in sports medicine/physical therapy
- Hotels and Amenities
- Opportunity to showcase our area on a regional and national scale
- Impactful investment that can anchor redevelopment in the region



FOUNDED IN 2003

# SPORTS FACILITIES COMPANIES

OUR MISSION  
IMPROVE THE  
HEALTH & ECONOMIC  
VITALITY OF THE  
COMMUNITIES  
WE SERVE

**3,000** COMMUNITIES  
SERVED

**\$15 BILLION**  
IN PLANNED & FUNDED FACILITIES

**25 MILLION**  
ANNUAL VISITS TO SFM FACILITIES

**2,500+**  
TEAM MEMBERS  
AND GROWING

PLANNING  
OPTIMIZATION



DEVELOPMENT  
MANAGEMENT

THE VOICE OF THE INDUSTRY

**ICMA**

INTERNATIONAL CITY/COUNTY  
MANAGEMENT ASSOCIATION

community

**PLAYMAKER**



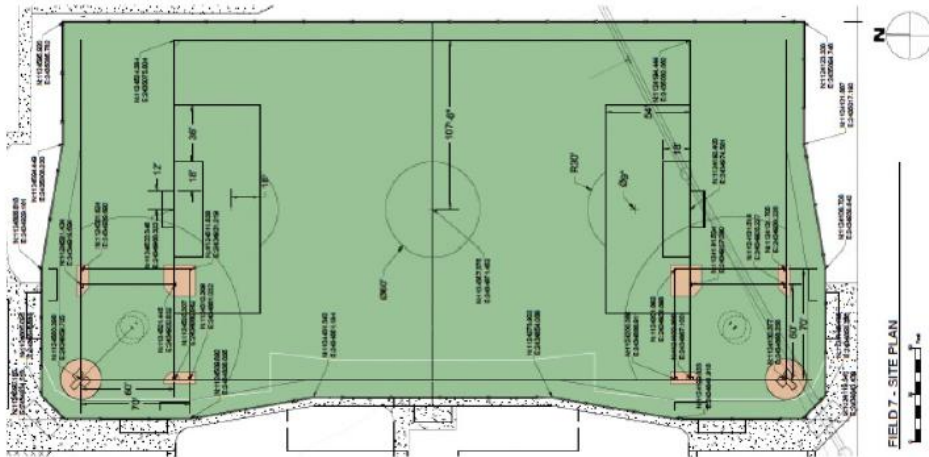
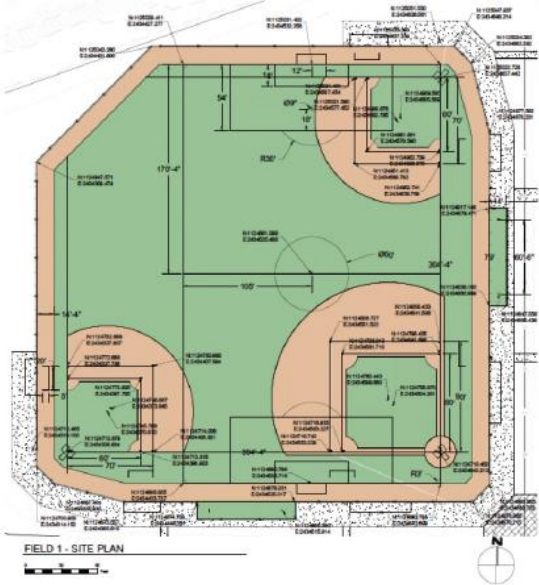
THE ASPEN INSTITUTE  
**PROJECT PLAY**

 **SFNETWORK**

THE SINGLE LARGEST & FASTEST GROWING SPORTS FACILITY NETWORK

[WWW.THESFNETWORK.COM](http://WWW.THESFNETWORK.COM)

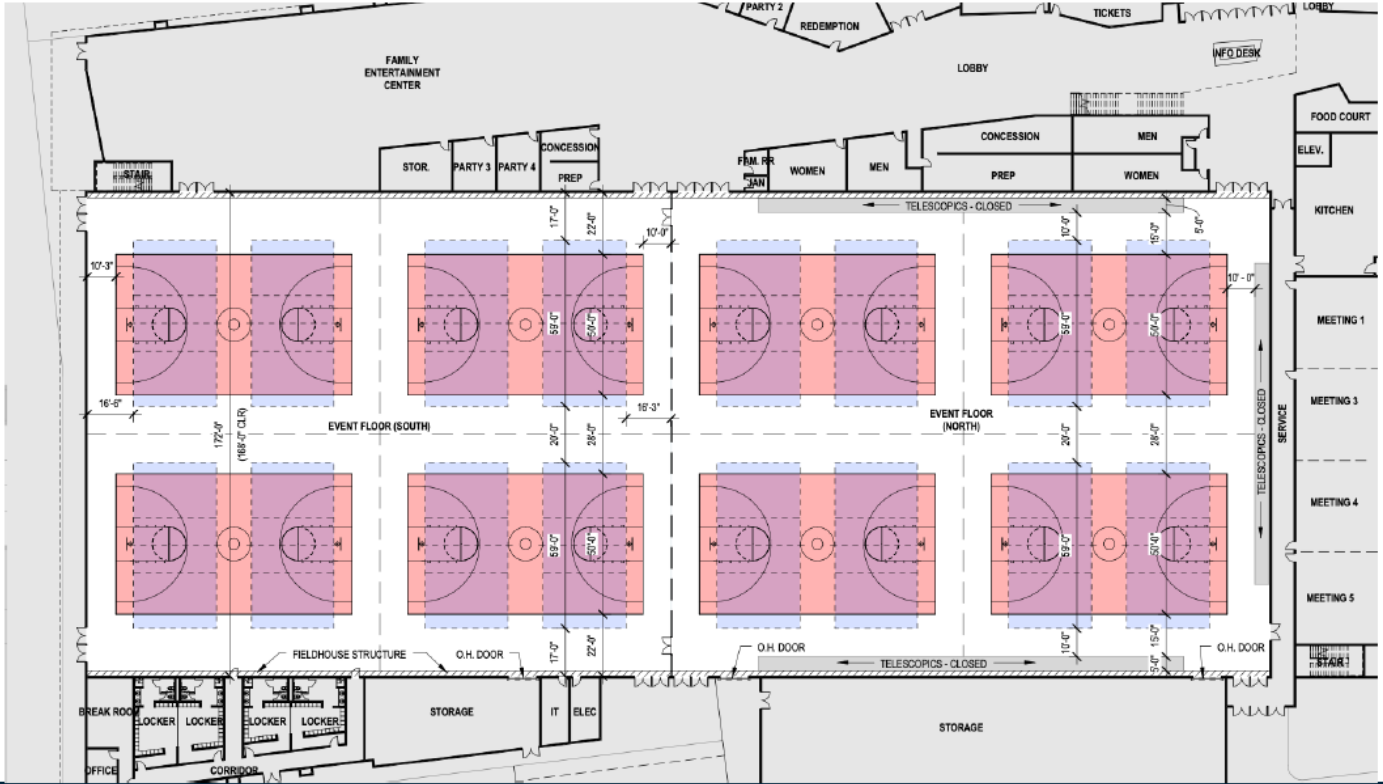
# FLEX FIELDS



# FLEX FIELD EXAMPLES



# VISION – BASKETBALL + VOLLEYBALL LAYOUT



# HOOVER MET COMPLEX

## SPECIFICATIONS:

Indoor Facility:  
155,000 ft<sup>2</sup>  
120 Acres

## Performance:

- Economic Impact: \$68M
- Room Nights: 85,000+
- Nearly 70% programmable time given back to P&R

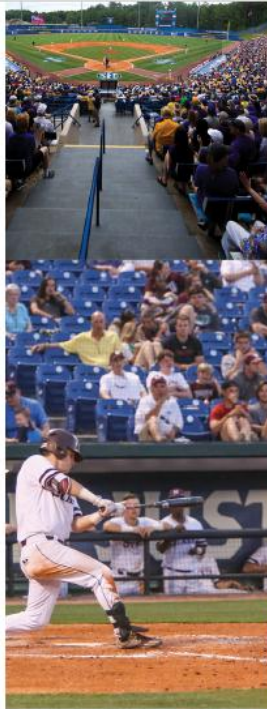
## FACILITIES:

17 Volleyball / 11 Basketball Courts  
16 Tennis Courts  
5 Soccer / Lacrosse / Football Fields  
5 Baseball / Softball Fields  
Baseball "Met" Stadium  
1/4 Mile Indoor Walking Track  
Food Court & Concessions  
Flexible Meeting Spaces & Locker Rooms  
Indoor Climbing Area  
Inclusive Splash Pad & Playground  
RV Park  
Tradeshow Space: 300 Booths

## LOCATION:

30 Minutes from the Airport

HOOVER, AL



# Timeline

## **Phase 1 (Weeks 1-7): Market Assessment**

- Site visit, market research, comparable case studies, stakeholder meetings

## **Phase 2 (Weeks 6-19): Financial Feasibility Study**

- Recommended facility program, construction estimate, financial forecast and pro forma, operational models, funding options, governance models

## **Phase 3 (Weeks 17-20): Economic Impact Analysis**

- Economic Impact Projections, tax generation, jobs and hotel impacts

## **Phase 4 (Weeks 20-22): Community Outreach and Presentations**

- Draft and completed final feasibility study, Community presentations