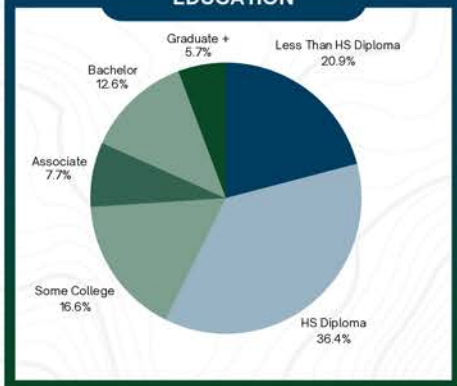


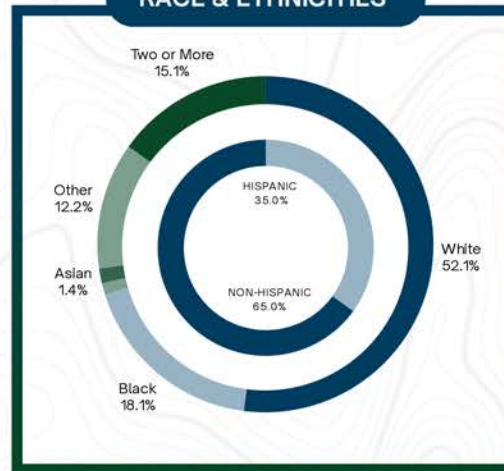


# CUMBERLAND COUNTY

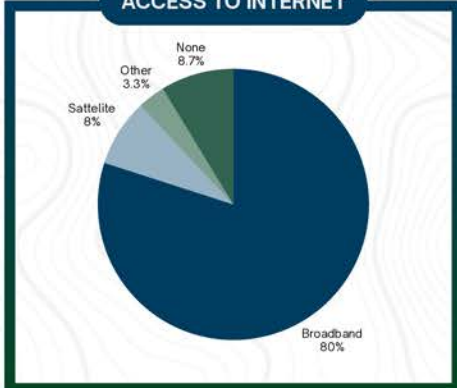
## EDUCATION



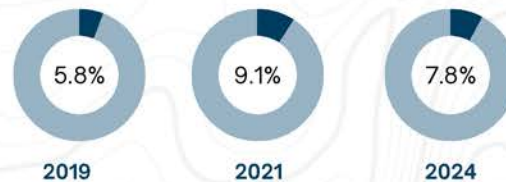
## RACE & ETHNICITIES



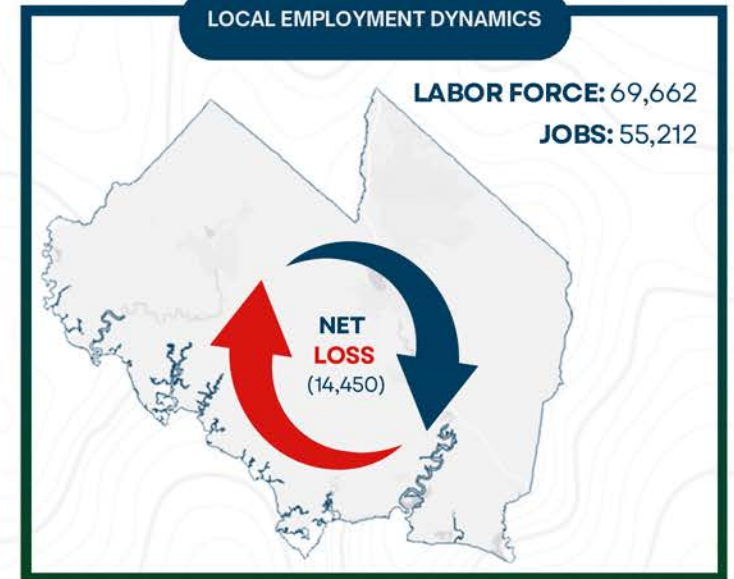
## ACCESS TO INTERNET



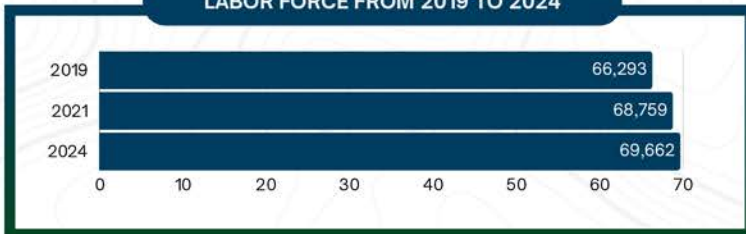
## UNEMPLOYMENT RATE FROM JULY 2019 TO 2024



## LOCAL EMPLOYMENT DYNAMICS



## LABOR FORCE FROM 2019 TO 2024



## MEDIAN AGE

**37.60**

## POPULATION GROWTH FROM 2010 TO 2024



# CUMBERLAND COUNTY

## CURRENT CONDITIONS

Cumberland County is also the region's manufacturing center. Manufacturers in the County employ almost 6,500 people – almost three times as many as Atlantic County which has the next largest number of manufacturing employees. Cumberland has always been a large regional manufacturing hub. Its history includes glass, textiles, and food processing. The City of Millville was referenced by Carl Sandburg in a poem of the same name: “Down in southern New Jersey, they make glass. By day and by night, the fires burn on in Millville and bid the sand let in the light.” Glass companies were prominent in all three of the County's major cities: Vineland, Millville, and Bridgeton. Welch's Grape Juice and Progresso were well-known food producers that had facilities in Vineland. Vegetable processing, milk production, and textiles were prominent in Bridgeton. Historic Greenwich village, founded in the late 1600s, is one of the oldest settlements in New Jersey and an early point of entry for goods and commodities being shipped up the Cohansy River.

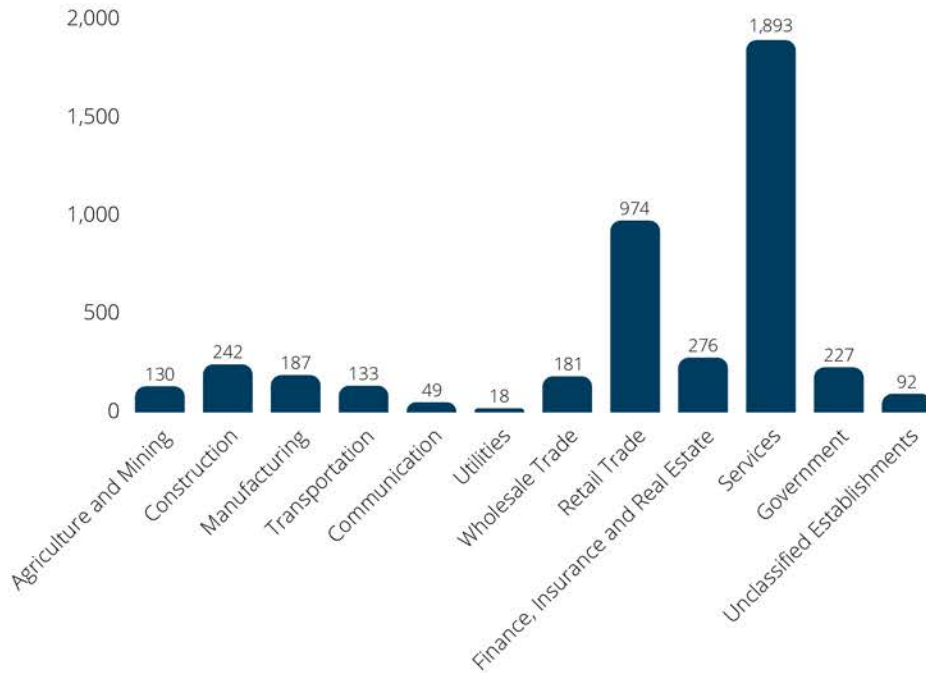


# CUMBERLAND COUNTY

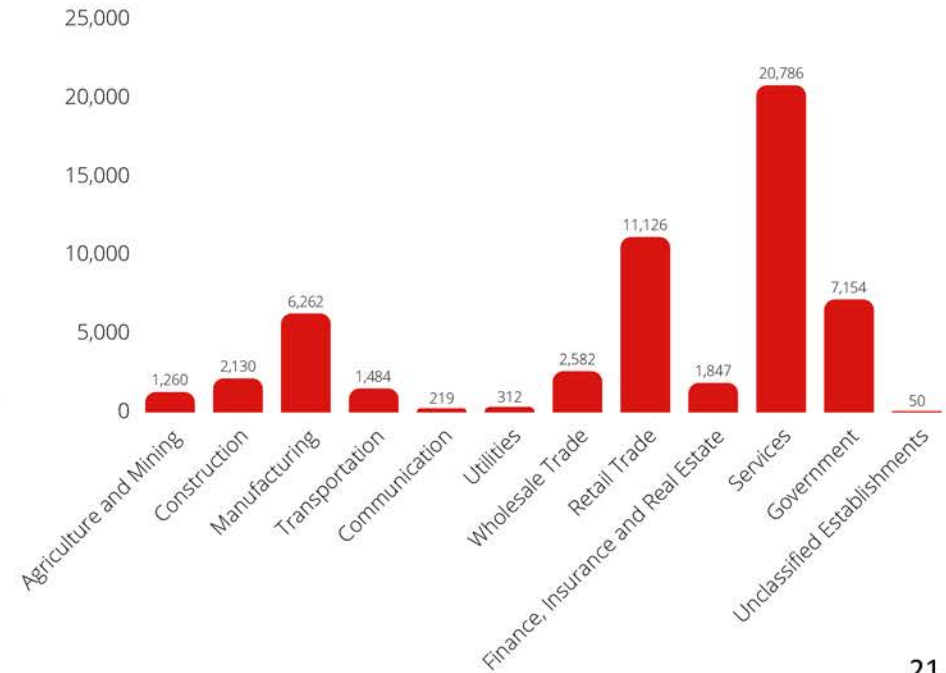
## CURRENT CONDITIONS

Today, as shown in the chart below, the County economy is diverse. Agriculture remains a significant sector. Sand mining in the southern part of the County is a prominent presence. The most recent Census of Agriculture indicates that the value of agricultural products sold was \$212,649,000 making it the largest agricultural economy in the region, and one of the largest in the State. The Retail and Service sectors are also significant contributors to the local economy.

**CHART 1: EMPLOYMENT COMPOSITION IN CUMBERLAND COUNTY BY THE NUMBER OF EMPLOYERS**



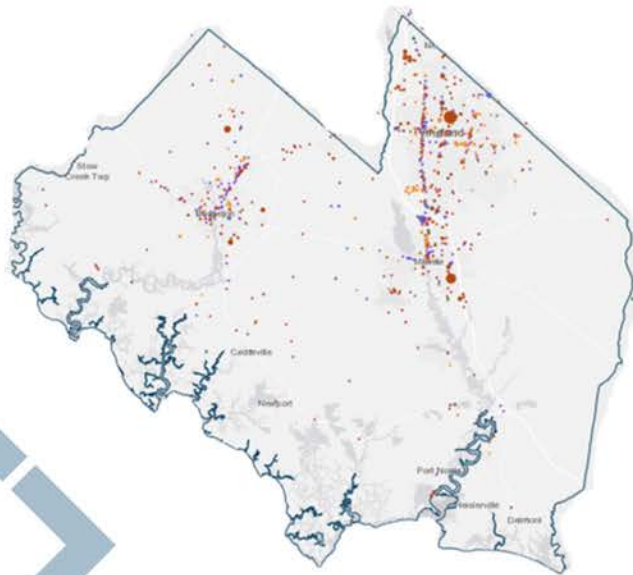
**CHART 2: EMPLOYMENT COMPOSITION IN CUMBERLAND COUNTY BY THE NUMBER OF EMPLOYEES**



# CUMBERLAND COUNTY

## EMERGING & NEW INDUSTRIES

- Transportation & Public Utilities
- Restaurants, Bars, & Clubs
- Manufacturing
- Retail
- Health
- Hospitality
- Recreation & Entertainment



**LABOR FORCE**  
69,400 PERSONS (NJ DOL)

**TOTAL EMPLOYMENT**  
64,600 (NJ DOL)

**ANNUALIZED UNEMPLOYMENT RATE**  
6.8% (NJ DOL)

**MEDIAN HOUSEHOLD INCOME**  
\$62,214 (2024 ESRI)

**POVERTY RATE**  
17.5% (ACS 2023)

**EDUCATIONAL ATTAINMENT**  
79.1% HIGH SCHOOL OR HIGHER (ACS 2023)

**AVERAGE COMMUTER TIME TO WORK**  
27.5 MINUTES (ACS 2023)

As seen on page 30, there are a number of emerging industry sectors in the Southern New Jersey Region that will augment the County's economy. The Rutgers Food Innovation Center is located in Bridgeton. Coupled with the Food Specialization Center at the Florida Avenue Industrial Park, this has spurred investment in new food technology. New investment in a community sewage treatment system in Downe Township will open the door to new jobs and commercial development along the County's Bay Shore – one of the more economically distressed areas of Cumberland County. The film industry, the Trout National Golf Course in Vineland, the New Jersey Motorsports Park and new industrial park development will provide for new jobs, a growth in tourism, and other economic investments. The County has an active short line railroad that serves the sand mines, food processors and other industries along its route. These transportation assets interchange with CSX and NS in Vineland. The County's natural assets including the Nationally recognized Maurice River, the outstanding wetlands and bird habitat along the Delaware Bay and other nature preserves also provide enhancements to the area's quality of life and expand recreational opportunities for naturalists, boaters, and outdoor enthusiasts.